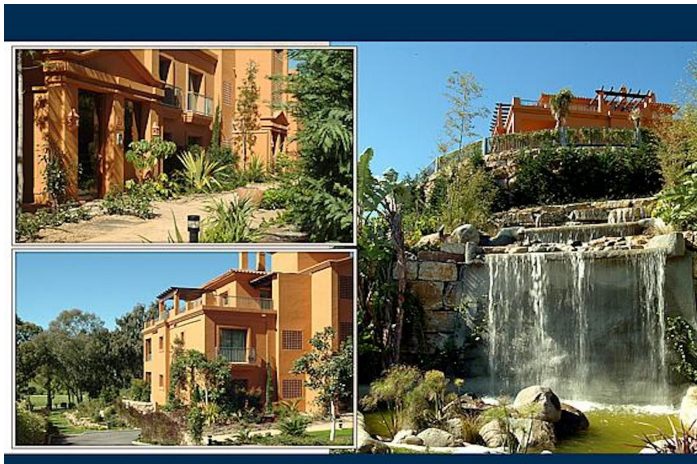




Ground Floor Apartment for sale in Atalaya, Estepona

449,000 €

Reference: JNP5173609 Bedrooms: 2 Bathrooms: 2 Plot Size: 30m² Build Size: 99m² Terrace: 25m²





Costa del Sol, Atalaya

Discover the elegance and tranquility of Benatalaya, an exclusive development located on the Atalaya , Estepona. Surrounded by golf courses and nature, this prestigious gated community offers a unique lifestyle, combining security, comfort, and a privileged setting. The homes at Benatalaya stand out for their modern design with Mediterranean touches, spacious terraces with panoramic views of the sea, golf courses, and mountains, bright interiors with high-quality finishes, fully equipped kitchens, and open spaces designed for maximum comfort. Among its amenities, residents can enjoy extensive tropical gardens, several outdoor pools, a fully equipped spa with a heated indoor pool, gym, and sauna, ideal for relaxing year-round. Thanks to its strategic location, Benatalaya is just minutes from the beach and the charming center of Estepona, and a short distance from Marbella, Puerto Banús, and the best leisure and dining areas on the Costa del Sol. Benatalaya is the perfect combination of exclusivity, well-being, and connection with nature. Ground Floor Apartment, Atalaya, Costa del Sol. 2 Bedrooms, 2 Bathrooms, Built 99 m², Terrace 25 m², Garden/Plot 30 m². Setting : Frontline Golf, Close To Schools, Urbanisation. Orientation : South West. Condition : Excellent. Pool : Communal, Heated. Climate Control : Air Conditioning, U/F Heating. Views : Mountain. Features : Covered Terrace, Private Terrace, Gym, Utility Room, Marble Flooring, 24 Hour Reception. Furniture : Fully Furnished. Kitchen : Fully Fitted. Garden : Private. Security : 24 Hour Security. Parking : Underground, Private. Category : Golf, Holiday Homes.



Features:

Features

Covered Terrace
Private Terrace
Marble Flooring
24 Hour Reception
Utility Room
Gym

Views

Mountain

Pool

Communal
Heated

Garden

Private

Category

Holiday Homes
Golf

Orientation

South West

Setting

Urbanisation
Close To Schools
Frontline Golf

Furniture

Fully Furnished

Security

24 Hour Security

Climate Control

Air Conditioning
U/F Heating

Condition

Excellent

Kitchen

Fully Fitted

Parking

Underground
Private