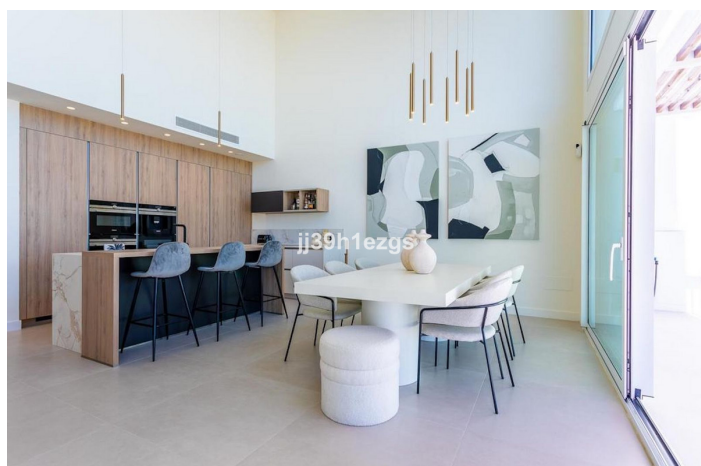
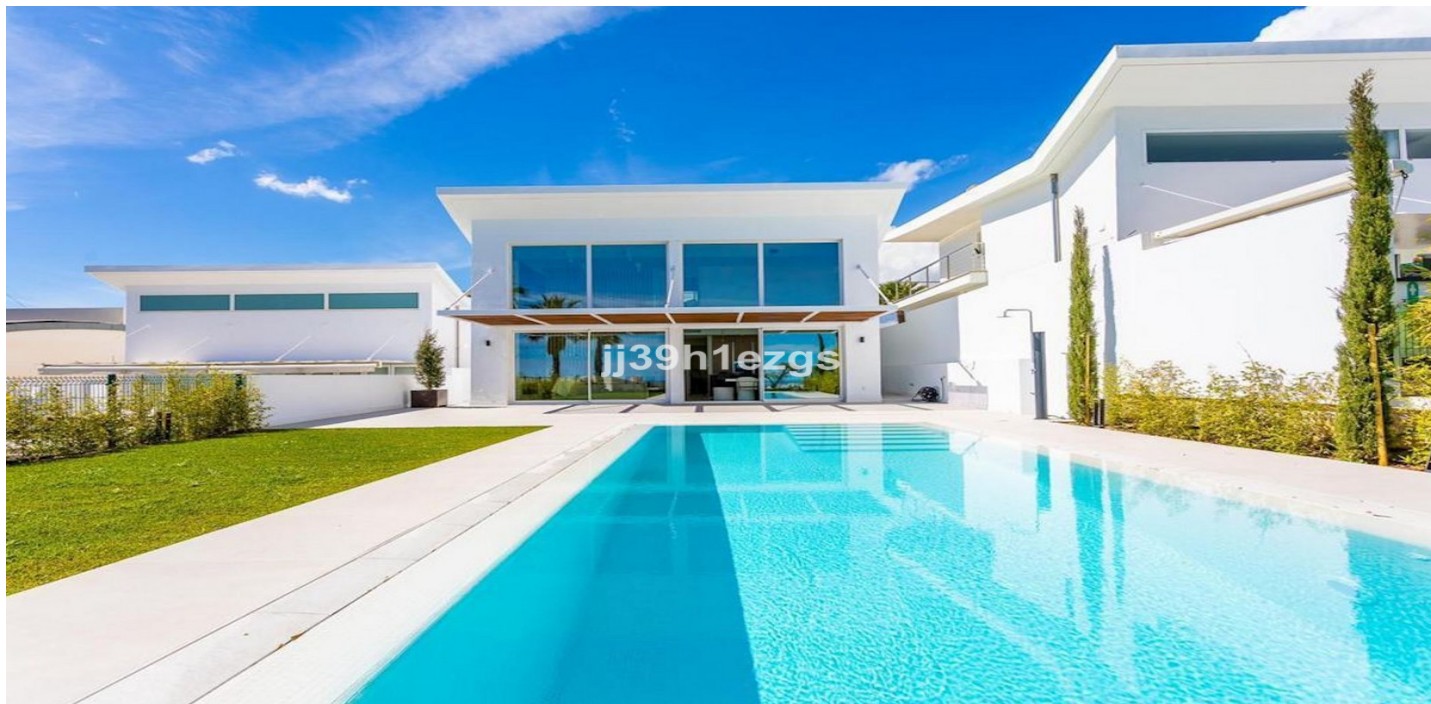




Detached Villa for sale in Benalmádena, Benalmádena

2,600,000 €

Reference: R5013613 Bedrooms: 3 Bathrooms: 3 Build Size: 423m²





Costa del Sol, Benalmádena

Exclusive Luxury Property in El Higuero, Benalmádena – 3 Bedrooms | 3 Bathrooms | Gym

Discover this elegant and sophisticated property located in the prestigious area of El Higuero, one of the most exclusive residential zones on the Costa del Sol. Designed for those who value quality, privacy, and well-being, this home offers a unique lifestyle surrounded by premium amenities and nature.

With a thoughtfully designed layout, the property features three spacious bedrooms with high-end finishes and three full bathrooms, each crafted with refined materials that reflect elegance and comfort in every detail.

At the heart of the home is a bright and spacious living area with direct access to a large private terrace, perfect for enjoying the stunning Mediterranean sunsets or hosting unforgettable evenings outdoors. The designer kitchen is fully equipped, blending functionality and aesthetics seamlessly.

Key Features:

- 3 Bedrooms | 3 En-suite Bathrooms
- Private terrace with ideal orientation and open views
- Fully equipped designer kitchen
- Ducted air conditioning
- Parking space and storage room included
- Private gym within the complex
- Outdoor swimming pools, landscaped gardens, and relaxation areas
- 24-hour security

All of this within a gated community with controlled access, just minutes from the sea and perfectly connected to Málaga city, the international airport, and Marbella.

This property is perfect for those seeking exclusivity, comfort, and an elevated lifestyle on the Costa del Sol.

Contact us for more information or to schedule a private viewing.



Features:

Features

Covered Terrace
Near Transport
Satellite TV
Ensuite Bathroom
Fitted Wardrobes
Utility Room
WiFi
Gym
Basement

Condition

Excellent

Kitchen

Fully Fitted

Parking

Garage

Orientation

North
East
South
West

Pool

Private

Garden

Private

Setting

Beachside
Close To Golf
Close To Port
Urbanisation
Close To Sea
Close To Shops
Close To Schools

Furniture

Fully Furnished

Security

24 Hour Security